



Welcome to Connellsville in Fayette County, Pennsylvania. Our city is located along the banks of the Youghiogheny River. It is an area rich in history.

Founded in 1806 by Zachariah Connell. Connellsville became a city with the unification of New Haven and Connellsville in 1909 to become the first city in Fayette County. When Connellsville became a city estimates have the population at more than 22,000, currently there are about 9,000 residents.

During the coke and coal days, Connellsville was king and beehive ovens lit up the hillsides. Railroads crisscrossed the city and trolley cars connected neighborhoods and towns.

Connellsville's once great legacy can still be seen in beautiful churches, buildings, and houses.

Please explore our city and visit our local merchants.

### Connellsville Cultural Trust

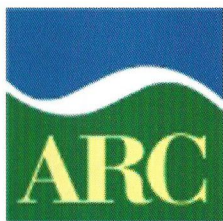
507 South Pittsburgh Street  
Connellsville, PA 15425  
724-626-0141

[www.connellsvilleculturaltrust.org](http://www.connellsvilleculturaltrust.org)

*“Preserving the Past,  
Enhancing the Present,  
Enriching the Future”*

We would like to thank the following organizations and individuals, who through their generous support have made this project possible.

### The Conservation Fund --



APPALACHIAN  
REGIONAL  
COMMISSION



NATIONAL  
ENDOWMENT  
FOR THE ARTS

A great nation  
deserves great art.

**250**  
**pittsburgh**  
imagine what you can do here.™



Penn State, Fayette,  
Eberly Campus  
David DiPietro



Connellsville Area Historical Society

Karen Hechler

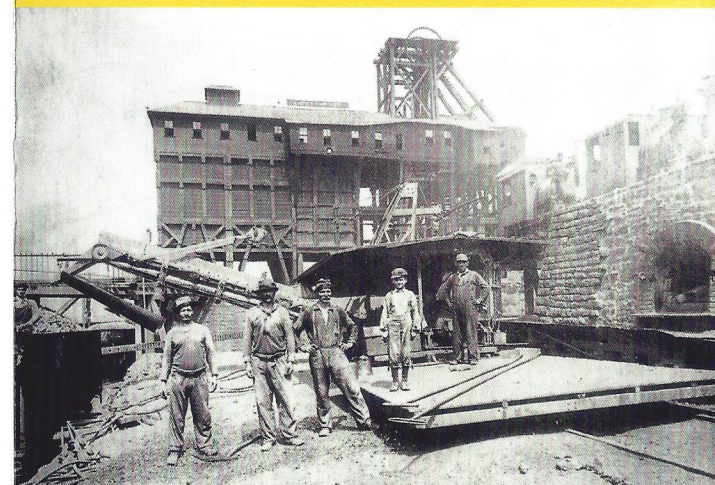
Tom Rusnack

and Friends of the Trust

Background Sign Photo by Dan Cocks

Sign Layout by Christopher Byers  
[christopher@awesomgamezone.com](mailto:christopher@awesomgamezone.com)

# HERITAGE TRAIL OF CONNELLSVILLE, PENNSYLVANIA



*Explore the Coal and Coke Capital  
of the World - Connellsville,  
by visiting our signs which tell the  
story, through words and pictures,  
of our city's rich heritage.*

Presented by:

FAYETTE COUNTY  
CULTURAL TRUST  
139 WEST CRAWFORD AVENUE  
CONNELLSVILLE, PA 15425